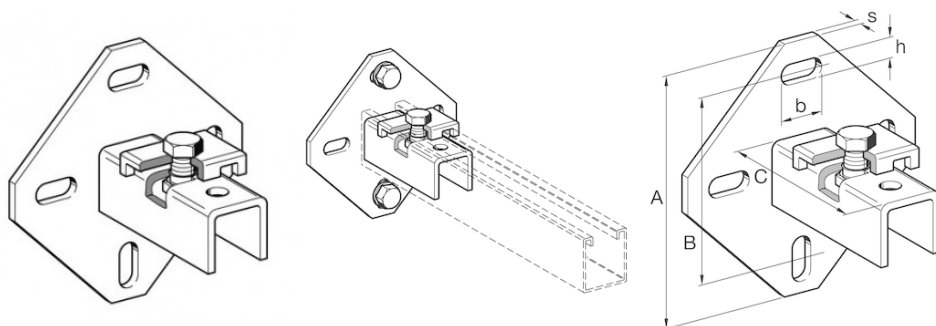


END SUPPORT WBD HCP - prosystemitalia.com

END SUPPORT WBD HCP - Group 1856



Application

In combination with a channel, End Support WBD is particularly suitable for setting up structures attached to walls, floors and ceilings and in particular as a base for frame structures made of channels.

The generous dimensions and the rhomb shape of the mounting plate provide for a high bending moment and safely stabilise lateral loads.

Installation

Normally, two anchors grouped opposite to each other and along the load axis are sufficient. Only in exceptional cases (e.g. high props in frameworks) four anchors are required.

Tightening torque for hexagon bolts ≥ 40 Nm.

For ceiling mounting under high loads (up to 7.0 kN), we recommend the use of at least one fully traversing bolt for connecting the channel to the End Support WBD (for examples see "Installation Guidelines").

Technical Data

Type	Suitable for channel	A [mm]	s [mm]	B [mm]	b [mm]	h [mm]	C [mm]
41/21-31	41/21/2.0 - 41/31/2.0	135	6	100	25	11	95
41/41-45	41/41/2.5	135	6	100	25	11	95
41/41-45 D	41/41/2.5 D	210	8	170	25	13	125

Working load for Wall mounting:

See tables on load charts for End Support WBD in chapter "Brackets"

The figures apply on walls if two anchors of the load class as stated are used.

Working load for Ceiling mounting:

The permissible maximum vertical load for ceiling mounting with Holding Bracket amounts to 2.0 kN.
Using at least one traversing bolt (class 8.8) 7.0 kN.

Material:Steel, HCP.

Tipo	Kg	Pezzi per confezione	Codice Articolo
WBD 41/21	0.73	1	198063
WBD 41/41	0.83	1	198070
WBD 41/41	1.5	1	113918
WBD 41/41 D	2.46	1	198100